

Bespoke Engineering Solutions.



Company Overview

Copamate is an Australian-owned innovative engineering solutions company, providing sustainable manufacturing across various sectors. For over 30 years, Copamate has delivered high-quality products and services designed to enhance efficiency and minimise installation times.

Copamate's core focus is to supply customers with the highest quality products and services; embracing - problem solving, sourcing, product development, manufacturing and refurbishment programs.

Capabilities

- Design
- Reverse Engineering
- Additive Manufacturing
- Jigs & Fixtures
- Refurbishments
- Fibreglass Repairs
- Press Tools
- Shaft Repairs
- Levelling
- CNC Mills
- CNC Lathes
- CNC Swiss Lathes
- CNC Laser
- CNC Router
- CNC Pressbrake
- Turret Punching
- Sheet Rolling
- Sheet Metal
- Pipe Bending
- Painting & Coatings
- CNC Bending & Rolling
- Digital Cold Spray
- On-Site Paint Repairs
- Stamping
- Welding
- Assembly
- Quality Inspection

Bespoke Fabrication

“Copamate provided a quality turn key solution ahead of time exceeding our clients expectations.”

— Celina Clarke, Director ISM

Accreditations & Contacts



Accreditations

AS9100 | EN15085 in progress
ISO 22163:2023 (IRIS) - International Rail
AS 3992 - AS 1665 - AS 1796 - AS4037
4458 - AS/NZS 1654 - AS/NZS 1665



Contact Details

Jo Hocking
BDM
joh@copamate.com
0403 608 474

Chandra Shanmugam
General Manager
chandra@copamate.com
0403 734 596



Bespoke Engineering Solutions.

Fabricated Product Examples

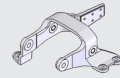
not limited to



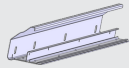
Saddle Fabrication



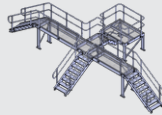
Lifting Stillage Assembly



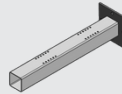
Linkage Assembly



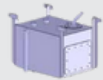
Aluminium Panel



Access Platform Fabrication & Assembly



Cantilever Fabrication



Custom Retention Tank



Dead Lever



Dust Bin

Bespoke Products

not limited to



BM1-7 H Frame Jig & Fixture



BM3 H-Frame Jig & Fixture



BM1-7 H-Frame Jig & Fixture



Fibre Glass Seat Surrounds



Fibre Glass Step Wells



Bumper Bars



Windows



Spark Arrestors



Bump Pads

Our Projects

• Jigs and Fixtures for Workshops 2024

Jigs and fixtures for Alstom workshop sites. Copamate specialised in the design and fabrication of jigs and fixtures for the NGT and x'trapolis workshop site.

• A2 Class Tram Parts 2023

Supplying windows, doors, metal, glass, fiberglass parts. Copamate has been a trusted partner in the Trams Refurbishment Program, Copamate has been involved in the refurbishment of A2 Class tram parts.

• Metro Tunnel Light Fittings 2023

To design and manufacture fabricated light fittings as per client sketch. Copamate played a pivotal role in the prestigious Metro Tunnel Project by designing and manufacturing bespoke light fittings.

• HCMT - Onsite Paint Repair 2023

On site vehicle body paint repair service. Part of the on going Victorian fleet upgrade initiative, the Victoria State Government undertook the modernisation of Melbourne's Comeng train fleet.

• HCMT - Window Replacement 2023

On site window replacement for High Capacity Train. As part of the Victorian fleet upgrade initiative, Copamate undertook the modernisation of Melbourne's Comeng train fleet.

• Secondary Steel Supports 2019

Copamate successfully completed the fabrication and assembly of secondary steel supports for BP, a client in the resource exploration sector.

• B Class Doors for Trams 2022

As part of the ongoing tram refurbishment initiative, Copamate has been involved in the refurbishment of doors and the production of new windows for Melbourne's B-Class trams.

• Secondary Steel Supports 2019

Copamate designed and engineered bespoke pipe supports for Sikla, ensuring optimal safety for the client's operations.

• V Line Z Class Parts 2019

Copamate undertook a significant project in collaboration with the Downer, focusing on the manufacturing of bogie components for the V Line Z class trains.

• Royal Adelaide Hospital 2011

Copamate contributed to design and supply modular corridor supports for hospital services. A crane lifting modular was also designed to lift the assembled frames into the building. Around 3500 supports were supplied for the project.